



Thermoplastic mag-drive rotary vane pumps HPP/HPF

Mag drive rotary vane pumps series HPP-HPF are made of thermoplastic materials (PP/PVDF) and are suitable for corrosive liquids, alkalis, toxic, noxious and carcinogenic fluids.

In seal-less magnetic drive vane pumps, the external magnet is directly connected to the motor shaft and it transmits the torque to the internal magnet. The magnetic field created produces a rotation without physical contact between the parts and the rotor spins. The vanes inside the rotor slide in and out of their seat and they move the fluid. The rear casing is placed between the two magnet joints and it hermetically closes the hydraulic part from the motor.

Thanks to the innovative mag drive system, pumps model HPP-HPF reduce the risks of leakage and the maintenance costs. HPP-HPF pumps are useful for low flow and high head applications such as Pilot Plants and Sampling.

Typical applications

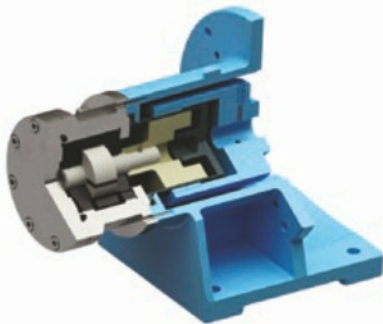
- High corrosive liquids
- Toxic, noxious and carcinogenic liquids

Industries supplied

Chemical, petrochemical, pharmaceutical, paper mills, textile industry, food processing, sugar plants, electronics, water treatment plants, any hazardous chemical applications.

Materials in contact with the liquid

- casing, end cover, internal magnet and rear casing: PP/PVDF;
- O-ring: EPDM/VITON

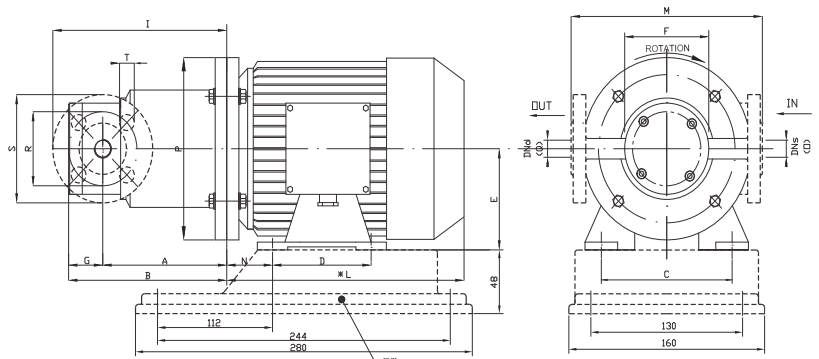


HPP/HPF TECHNICAL DATA

PUMP SIZE	MATERIAL	Q MAX		H MAX		SUCTION CONNECTION	DISCHARGE CONNECTION	PUMP WEIGHT (KG)		SUITABLE MOTOR POWER (KW) - 1450 rpm	MOTOR FLANGE AND FRAME
		50HZ (l/h)	60HZ (usgpm)	50HZ (bar)	60HZ (PSI)			PP	PVDF		
HPP/HPF 100 1'R	PP- PVDF	120	0.66	5	72	3/8" FEMALE	3/8" FEMALE	2.9	3.2	0.37	71 - B3/B5
HPP/HPF 200 1'R	PP- PVDF	200	1.1	5	72	3/8" FEMALE	3/8" FEMALE	2.9	3.2	0.37	71 - B3/B5
HPP/HPF 300 1'R	PP- PVDF	290	1.5	5	72	3/8" FEMALE	3/8" FEMALE	2.9	3.2	0.37	71 - B3/B5
HPP/HPF 400 1'R	PP- PVDF	360	1.85	5	72	3/8" FEMALE	3/8" FEMALE	2.9	3.2	0.37	71 - B3/B5
HPP/HPF 600 2'R	PP- PVDF	600	2.5	5	72	1/2" FEMALE	1/2" FEMALE	7	7.5	1.5	90 - B3/B5
HPP/HPF 800 2'R	PP- PVDF	800	3	5	72	1/2" FEMALE	1/2" FEMALE	7	7.5	1.5	90 - B3/B5
HPP/HPF 1000 2'R	PP- PVDF	990	3.5	5	72	1/2" FEMALE	1/2" FEMALE	7	7.5	1.5	90 - B3/B5

Specifications

Flow max.:	1 000 l/h
Pressure max.:	5 bar
Temperature max.:	PP 70 °C PVDF 90 °C
System pressure max.:	8 bar



Tuma Pumpensysteme GmbH
Eitnergasse 12 - 1230 Wien (Austria)
www.tumapumpen.at - office@tumapumpen.at
LinkedIn /tuma pumpensysteme gmbh
We are happy to help you: +43 1/914 93 40

